

My Teach Connect

Empowering Education Digitally

MY TEACH CONNECT – THE FUTURE OF SMART SCHOOL MANAGEMENT

PRESENTATION 2025



Presented For:
My Teach Connect

Presented By:
**Nshimiyimana
Christophe**

+250-798-873-226  www.myteachconnect.com 

THE HIDDEN CHALLENGES IN SCHOOL MANAGEMENT

The Reality Before My Teach Connect

Many schools still rely on manual, paper-based systems for managing students, teachers, and administrative tasks. This leads

- to:
- **Wasted Time:** Teachers spend hours on attendance, grading, and paperwork instead of focusing on teaching.
 - **High Costs:** Printing records, admission forms, and report cards can cost schools thousands every year.
 - **Communication Gaps:** Parents struggle to stay informed about their child's progress, fees, and school events.
 - **Errors & Mismanagement:** Manual fee collection, attendance tracking, and student records often lead to mistakes and financial losses.



But what if there was a smarter way?

THE ULTIMATE ALL-IN-ONE SCHOOL MANAGEMENT SOLUTION

My Teach Connect is a powerful, easy-to-use platform designed to help schools:

- ✓ **Manage Students & Teachers Effortlessly** (Attendance, Results, Homework, Timetables)
- ✓ **Streamline Administration** (Fees, Expenses, Library, Transport)
- ✓ **Enhance Communication** (SMS & Email Alerts to Parents & Staff)
- ✓ **Digitize Learning** (Live Classes, Study Materials, ID Cards, and Certificates)
- ✓ **Improve Efficiency & Save Costs** (Automation reduces workload and expenses)

It's time to upgrade your school and say goodbye to outdated systems!





HOW MUCH TIME & MONEY CAN YOUR SCHOOL SAVE?

Example 1: Attendance Management

Let's say your school has 500 students and 20 teachers.

- Manual Attendance takes 10 minutes per class.
- 5 periods per day × 20 teachers = 1,000 minutes wasted daily.
- That's 16 hours per day (Almost 2 full-time staff members working on just attendance).
- Annual Cost Estimate: If 2 staff members earn \$300/month, that's \$3,600 per year wasted just on attendance tracking.

✓ With My Teach Connect: Attendance is recorded in seconds, saving time and salaries.

HOW MUCH TIME & MONEY CAN YOUR SCHOOL SAVE?

Example 2: Printing & Paper Costs

A school managing 500 students
typically prints:

- Admission forms, fee receipts, report cards, and notices.
- Estimated printing cost per student/year: \$10
- Total printing cost: \$5,000 per year

✓ With My Teach Connect: Digital records reduce paper usage, saving at least \$5,000 annually.



BENEFITS FOR SCHOOLS, PARENTS, AND STUDENTS

Before the introduction of **My Teach Connect**, schools struggled with time-consuming and costly manual processes. Administrators, teachers, and parents faced challenges that impacted efficiency and student success.

Who Benefits from My Teach Connect?



For Schools



For Parents



For Students



WHO BENEFITS FROM MY TEACH CONNECT?

For Schools:

- ✓ Save thousands by reducing paperwork, staff workload, and manual errors.
- ✓ Get instant reports on finances, student progress, and staff performance.
- ✓ Ensure smooth communication between teachers, parents, and students.

For Parents:

- ✓ Track student progress, attendance, and results in real time.
- ✓ Pay school fees online with a few clicks.
- ✓ Get instant notifications about school events and assignments.

For Students:

- ✓ Access study materials and homework anytime.
- ✓ View schedules, exam timetables, and results instantly.
- ✓ Participate in live classes from anywhere.

✓ The Solution?

Our platform automates and digitizes school management, eliminating manual work, reducing costs, and improving communication. Schools, parents, and students all benefit—making education smarter, faster, and more efficient!

JOB OPPORTUNITIES FOR YOUTH

For Young Professionals & Graduates:

- ✓ **Employment Opportunities** – Schools adopting My Teach Connect need IT support, digital administrators, and trainers.
- ✓ **Skill Development** – Youth can gain experience in tech support, software management, and customer service.
- ✓ **Freelancing & Remote Jobs** – Tsinda Media actively hires digital marketers, content creators, and virtual assistants to support schools using My Teach Connect. This creates more job opportunities for young professionals in the digital space.
- ✓ **Education & Training Roles** – My Teach Connect creates demand for e-learning content creators, online tutors, and trainers for digital tools.

✎ **By digitizing education, My Teach Connect is not just transforming schools but also opening doors to countless job opportunities for young professionals!**

CHOOSE A PLAN THAT FITS YOUR SCHOOL'S NEEDS

Plan	Monthly Cost	Students	Teachers	Features
Basic Plan	\$79/month	Up to 500	Up to 50	Full Feature Access
Standard Plan	\$89/month	Up to 1,000	Up to 100	Full Feature Access
Premium Plan	\$99/month	Unlimited	Unlimited	Full Feature Access

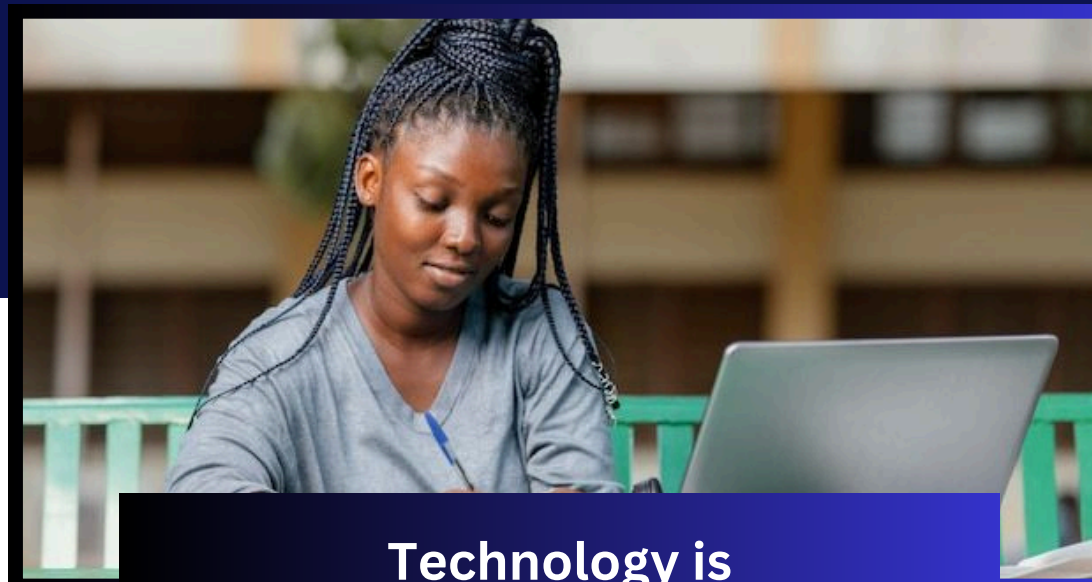
✓ Try for 15 Days – Cancel Anytime for a Full Refund!

✓ Annual Subscription: Pay for 8 months and get 4 months FREE!

FEATURES SCHOOLS GET ACCESS TO

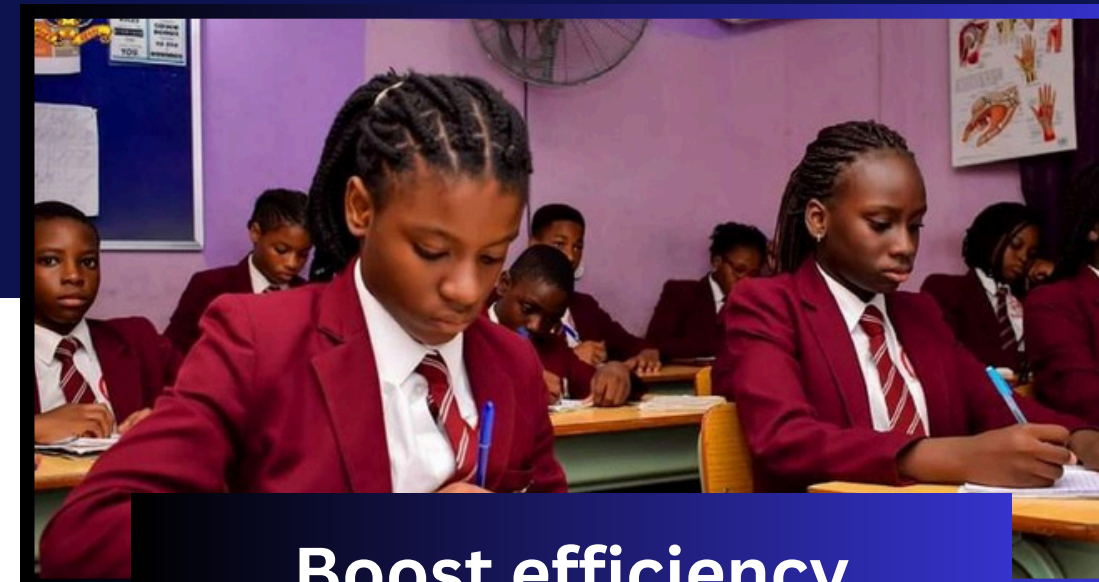
- 🎯 **Online Student Admission** – No more paper-based admissions!
- 🎯 **Online School Fee Submission** – Secure online payments.
- 🎯 **Attendance Tracking** – Automate attendance records.
- 🎯 **Library Management** – Track books and student borrowing history.
- 🎯 **Accounting System** – Keep track of income and expenses.
- 🎯 **Student Card Generator** – Instantly create student ID cards.
- 🎯 **Homework & Results Management** – Digital grading and reports.
- 🎯 **Transport Management** – Optimize school bus routes.
- 🎯 **Class & Exam Time Tables** – Organize schedules efficiently.
- 🎯 **Live Classes & Custom Certificates** – Improve online learning.
- 🎯 **Parent & Student Dashboards** – Personalized experience for all users.
- 🎯 **Setup Assistance & Ongoing Support** – 24/7 customer support.

THE FUTURE IS DIGITAL – DON'T GET LEFT BEHIND



**Technology is
transforming education**

My Teach Connect ensures your
school stays ahead.



Boost efficiency

Save thousands every year by
reducing manual work and
paperwork.

My Teach Connect
Empowering Education Digitally

**THANK YOU
FOR YOUR ATTENTION**

Contact Us

info@myteachconnect.com 

+250-798-873-226 

KN 84 Street, Kigali-Rwanda 

www.myteachconnect.com 